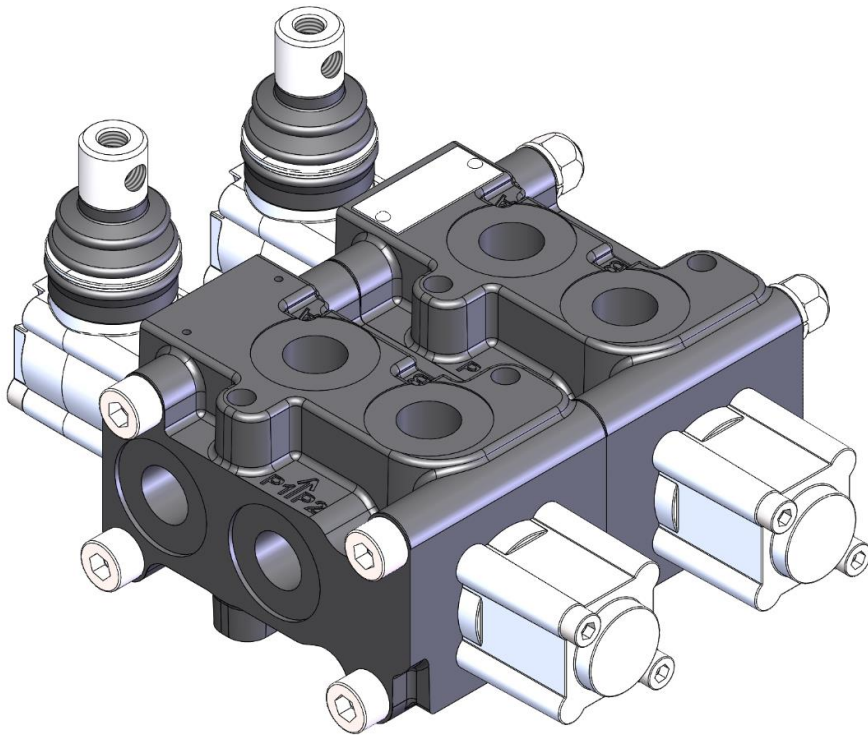


# DV60

---

## Stackable 6/2 selector valve manual control



**DV60:**

Simple compact and heavy duty designed with cast iron body and hard plated steel spool. 6/2 with two different options spool for open centre transition and closed centre transition. Flow rate up to 60 l/min, max pressure up to 315 bar and stackable up to 6 sections.

**Additional information**

This catalogue shows the product in the most standard configuration. For special requests please contact sales.

**WARNING!**

All specifications of this catalogue refer to the standard product at this date. Badestnost, oriented in continuous improvement, reserves the right to discontinue, modify or revise specifications, without notice.

**BADESTNOST IS NOT RESPONSIBLE FOR ANY DAMAGE CAUSED BY AN  
INCORRECT USE OF THE PRODUCT**

**First edition 01-2021**

**Working conditions**

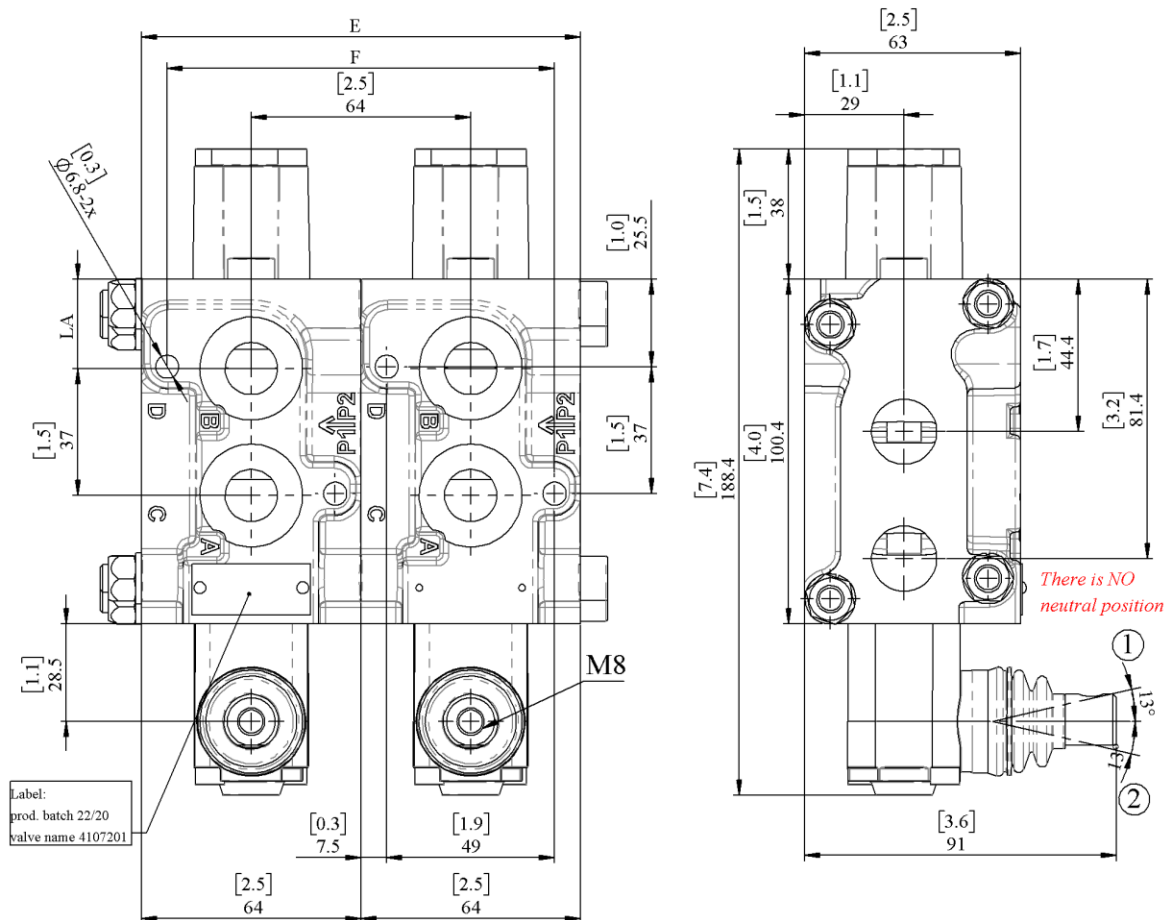
No. of available sections	up to 6	
Nominal flow rating	60 l/min	16 US gpm
Operating pressure (max.)	315 bar	4500 psi
Internal leakage (max.) A(B) to T	$\Delta p = 100 \text{ bar (1450 psi)}$ fluid and valve at 40 °C (104 °F)	5 cm <sup>3</sup> /min 0.31 in <sup>3</sup> /min
Fluid	Mineral based oil	
Fluid temperature	with NBR seals	from -20 °C to 80 °C from -4 °F to 176 °F
	with FPM (Viton) seals	from -20 °C to 100 °C from -4 °F to 212 °F
Viscosity	operating range	from 15 to 75 mm <sup>2</sup> /s from 15 to 75 cSt
	min.	12 mm <sup>2</sup> /s 12 cSt
	max.	400 mm <sup>2</sup> /s 400 cSt
Max contamination level	-/19/16 - ISO 4406	NAS 1683 - class 10
Ambient temperature	with mechanical devices	from -40 °C to 60 °C from -40 °F to 140 °F
	with pneumatic and hydraulic devices	from -30 °C to 60 °C from -22 °F to 140 °F
Tie rods tightening torque (wrench 13)	15 Nm	11 lbft

### Standard threads

Reference standard				
	BSP	UN-UNF	Metric	NPTF
Thread	ISO 228/1	ISO 263	ISO 262	Ansi B1.20.3
according to	BS 2779	ANSI B1.1 unified		
Cavity	ISO 1179	11926	9974-1	
dimension	SAE	J1926	J2244	J476a
according to	DIN 3852-2 (Shape X or Y)		3852-1 (Shape X or Y)	

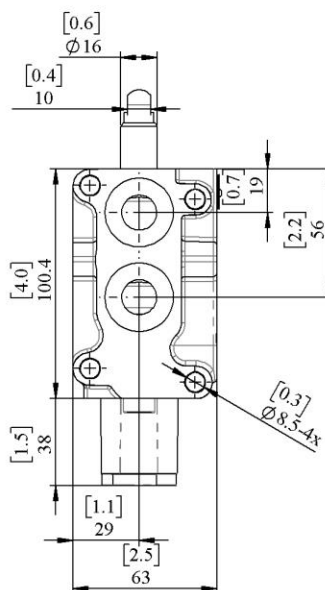
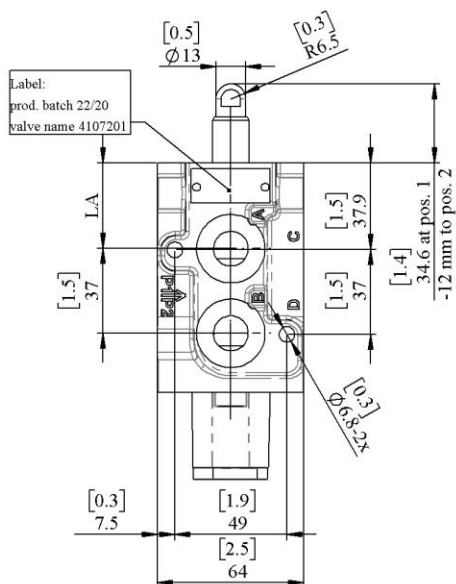
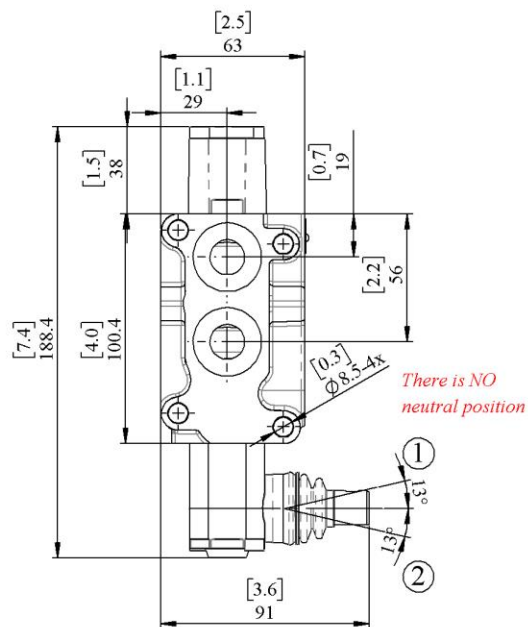
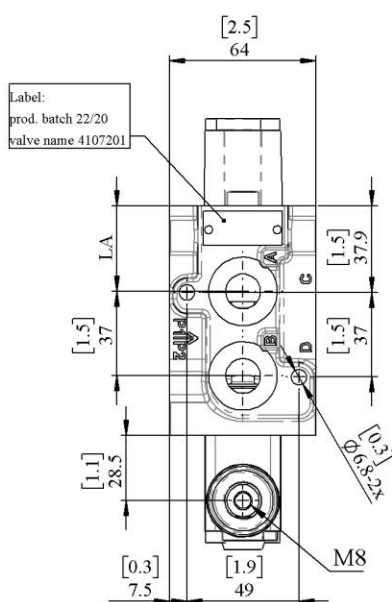
Port threadings, codes and seals when stacked			
Ports "codes"	BSP "G38"	BSP "G12"	UN-UNF "S8"
Inlet P1, P2	G3/8	G1/2	3/4-16 (SAE8)
Working ports A, B, C, D	G3/8	G1/2	3/4-16 (SAE8)
LA [mm]	39,4	37,4	39,4
Seals between sections	OR 21x2 NBR90	OR 26x2 NBR90	OR 26,7x1,78 NBR90
Pneumatic pilot ports		1/8-27NPTF	
Hydraulic pilot ports		G1/4	

**Dimensional data:**



TYPE	E		F		Weight	
	mm	<i>in</i>	mm	<i>in</i>	kg	<i>lb</i>
DV60	64	2.5	49	1.9	2.2	4.8
2DV60	148	5.8	113	4.4	4.6	10.1
3DV60	212	8.3	177	7.0	7	15.4
4DV60	276	10.9	241	9.5	9.4	20.7
5DV60	340	13.4	305	12.0	11.8	26.0
6DV60	404	15.9	369	14.5	14.2	31.3

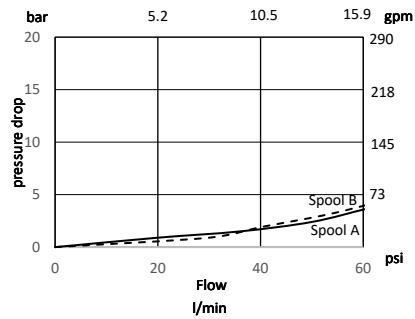
### Dimensional data:



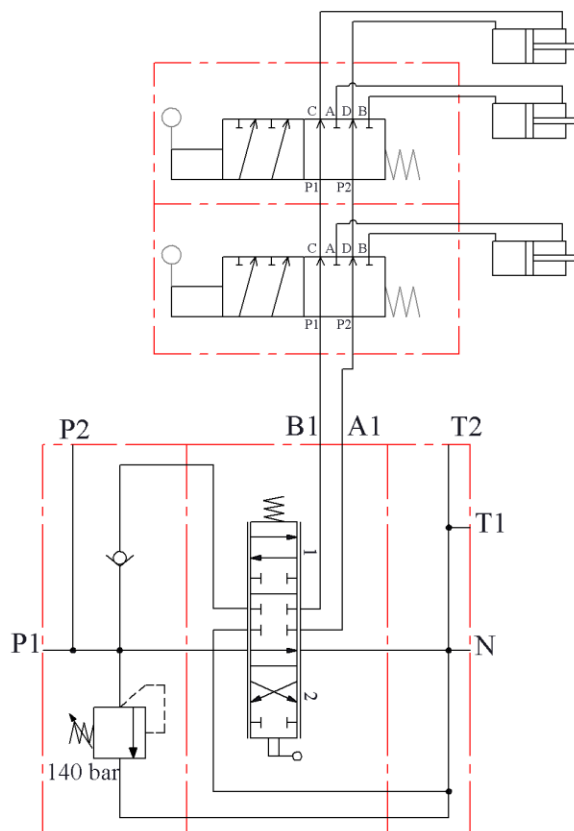
### Spool types and hydraulic schemes



Pressure drop between spools A and B

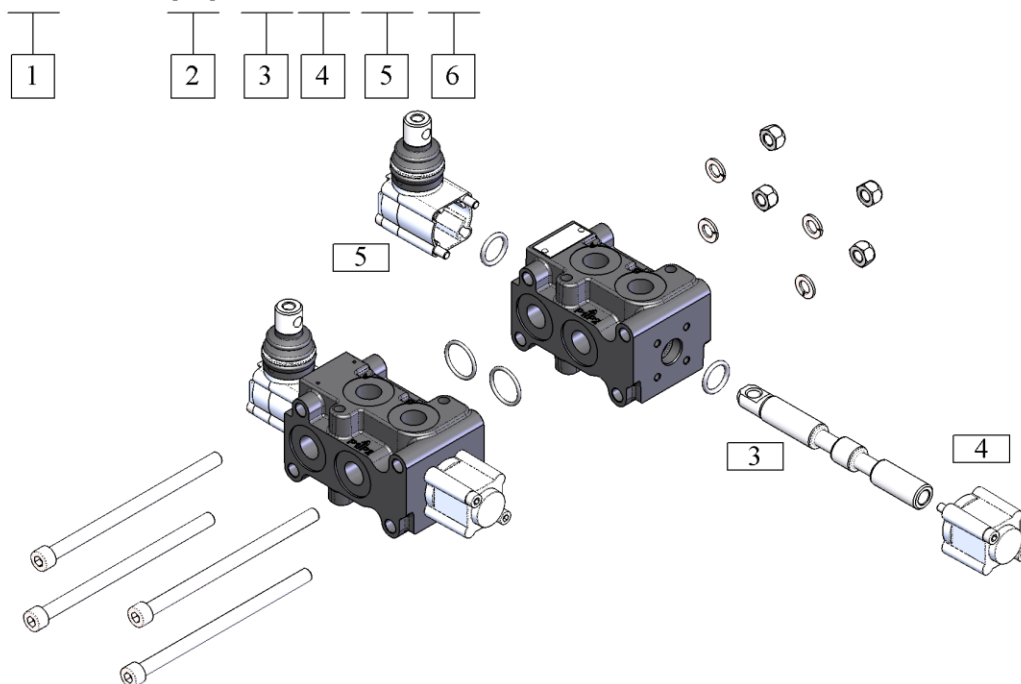


Mounting example



### Order codes, complete:

**2 DV60(R) /A 11 KZ 1 / B11KZ1 - G**



#### 1. No. of sections

up to 6 Qnt of sections, stacked together

#### 2. Position of control

- Standard, control next to P2 port  
(R) Right, control next to P1 port;  
**no special spool is required**

#### 3. Spool

A 6/2 spool with all ports connected in transition  
B 6/2 spool with all ports closed in transition  
AT As type A with spherical end  
BT As type B with spherical end

#### 4. Spool positioner and control (Side B)

6 2 position with spring return to pos. 1  
7 2 position with spring return to pos. 2  
11 Detent in position 1 and 2

0 Friction detent  
7P Pneumatic kit with return to pos. 2

#### 5. Lever control (Side A)

SL Without lever box  
KZ Lever box with lever M8  
KZ0 Lever box, rotated 180° with lever M8  
SLP Dust proof plate  
SLC End cap for pneumatic control

#### 6. Handle

1 Handle M8x120 mm

#### 7. Assembly kit (tie rod kits)

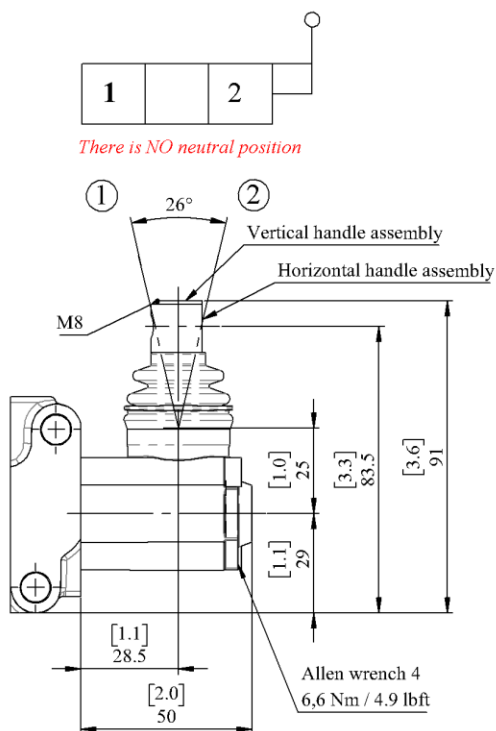
2S Tie rod kit 2 sections  
3S Tie rod kit 3 sections  
4S Tie rod kit 4 sections  
5S Tie rod kit 5 sections  
6S Tie rod kit 6 sections



### Spool controls (Side A)

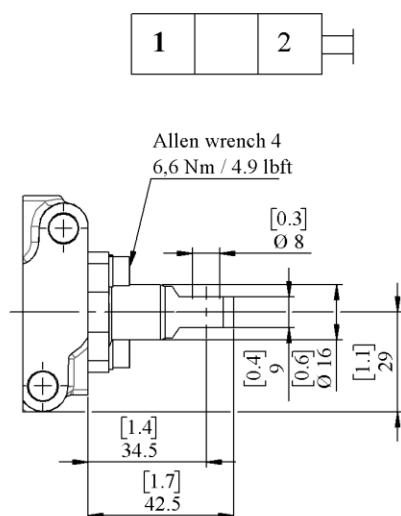
#### Type KZ:

Aluminum with protection booth lever pivot box; can be rotated 180 °(code **KZ0**)



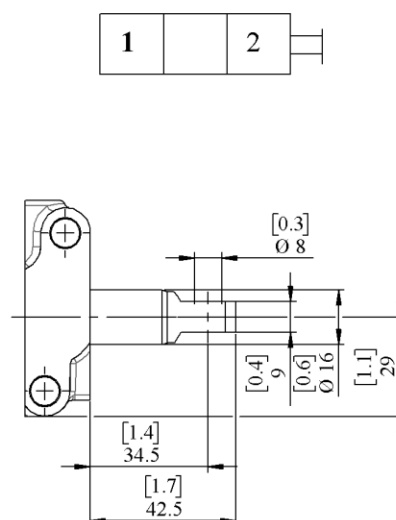
#### Type SLP:

Mechanical control with dustproof plate



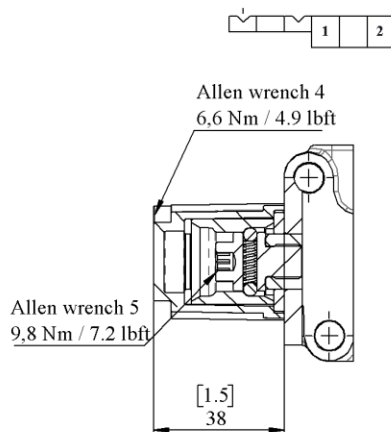
#### Type SL:

Mechanical control

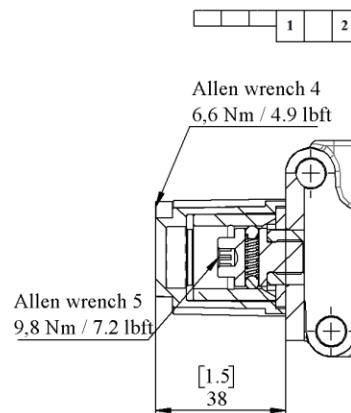


### Spool positioners (Side B)

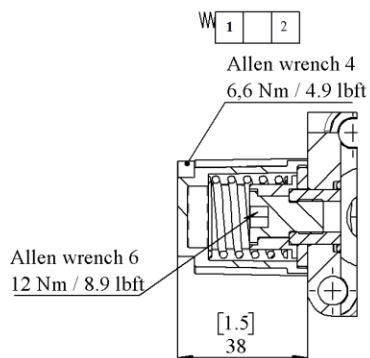
Type 11



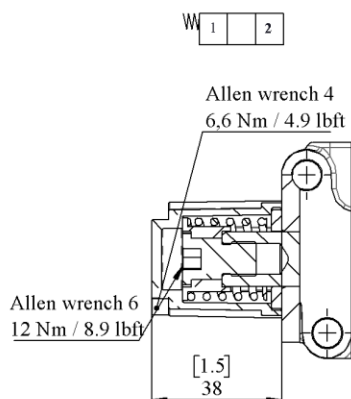
Type 0



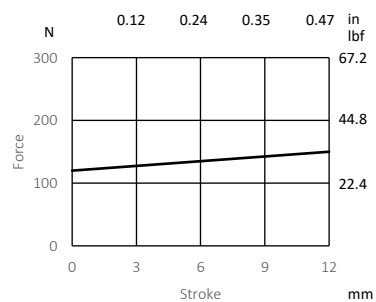
Type 6



Type 7

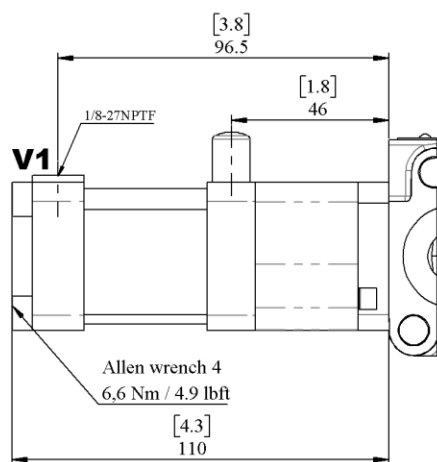


Force-stroke diagram



**Pneumatic control (side B)**

Type 7P (spring return to pos. 1)



Pilot, min = 5 bar

Pilot, max = 10 bar